

USAID
FROM THE AMERICAN PEOPLE

“Managing natural resources at the scale that matters”

1.0 Introduction to the Greater Gombe-Mahale-Katavi Ecosystems

The Greater Gombe, Mahale and Katavi Ecosystems (GGMKEs) found in Western Tanzania are important habitats which provide a diverse range of ecosystem services that sustain the livelihoods of millions of people living in the ecosystems and beyond. The ecosystems also harbor an incredibly high biodiversity species of fauna and flora including the chimpanzees (*Pan troglodytes*) and elephants (*Loxodonta africana*) – which are one of the flagship species for Western Tanzania.



Map of the Greater-Gombe-Mahale ecosystems and portion of Katavi ecosystem.

Despite of enormous socio-economic and ecological benefits from the GGMKEs, their existence is threatened by increasing environmental degradation caused mainly by human induced activities which pose serious threats to people and bio-diversity whose survival depend on these important ecosystems (see photos on sections 4 below).

Administratively, the GGMKEs falls in two political regions of Katavi and Kigoma and therefore cooperation between the two regions, their districts and other stakeholders working in the ecosystems is critical for successful implementation of any conservation and development plans in the ecosystems.



A mother chimpanzee (*Pan troglodytes*) with its baby in the GGMKE.

2.0 Rationale for the Greater Gombe-Mahale-Katavi Conservation Technical Team – (“The Steering Committee”)

In recognition of the environmental threats within these ecosystems and the need for coordinated implementation of conservation plans and strategies at the scale that matters, The Nature Conservancy with financial support from the Africa Biodiversity Consultative Group (ABCG) and in partnership with, Frankfurt Zoological Society and Pathfinder International (under the auspices of the Tuungane

Program) collaborated with the Jane Goodall Institute and the four districts located in the GGMKEs to form the Greater Gombe-Mahale-Katavi Ecosystems Conservation Technical Team (GGMKECTT) or simply known as “**Steering Committee**” in August 2013 in order to coordinate and advance sustainable conservation activities in the areas.



Some of Senior Government and NGOs officials who attended the launch of the GGMKEs Steering in Mpanda town –August 2013

With the continued financial support from ABCG, “**the Steering committee**” has so far achieved the following results:

- All members of the steering committee are now aware of their roles and responsibilities.
- The Steering committee has members from all 4 districts found in the GGMKEs and other key stakeholders working in the areas.
- The Steering committee agreed to include District Medical Officers as members of the committee in order advance integration of Population, Health and Environment (PHE) issues in the areas
- Developed a long term fundraising strategic plan for the GGMKEs.



The Steering Committee members discussing the strategic plan for the GGMKEs in Kasulu.

The structure, composition and roles of the GGMKECTT are outlined in the sections below.

2.1 Structure and composition of the GGMKECTT

The GGMKECTT is structured at two levels, firstly at the district level, where each of the four districts within the Greater Gombe, Mahale and Katavi ecosystems in both Kigoma and Katavi regions i.e. Kigoma Rural, Uvinza, Mpanda and Nsimbo districts has a District Council Technical Team (**DCTT**). The second level of the GGMKECTT is the Inter-district Technical Team whose members include Heads of departments from the four district councils, Chief Park Wardens from the National Parks found in Kigoma and Katavi regions as well as the Regional Natural Resources Advisors from the Kigoma and Katavi regions. Other development partners (International and local NGO’s), research institutions (TAWIRI, TAFIRI and TAFORI), Tanzania Forest services (TFS) and Wildlife Department will be invited in the meetings. The composition of members for each district and the inter-district team are shown in the table below:-

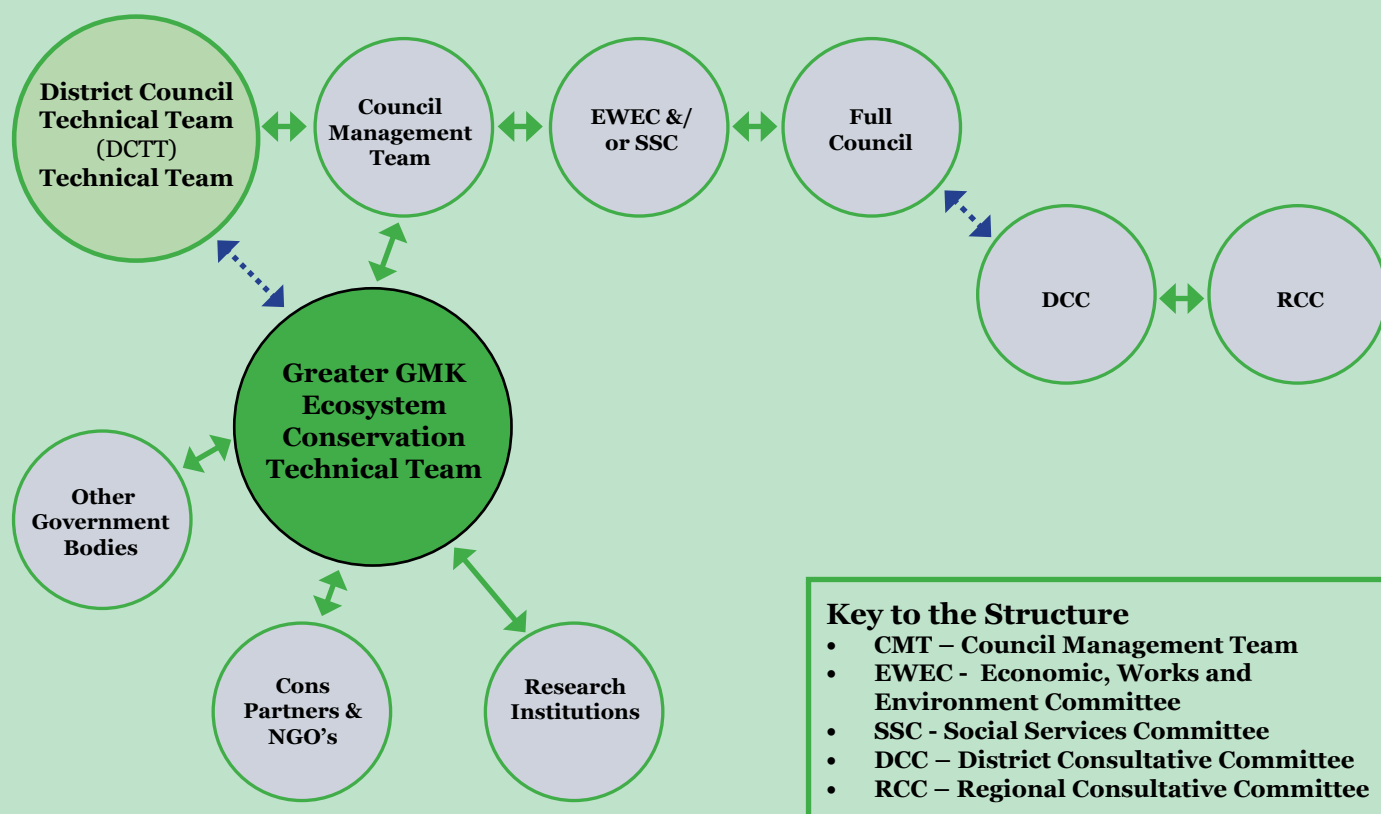
Composition of District Council Technical Team

1. District Land and Natural Resources Officer
2. District Livestock and Fisheries Officer
3. District Planning Officer
4. District Legal Officer
5. District Water Engineer
6. District Land Officer
7. District Forest Officer
8. District Agriculture, Irrigation and Cooperative Officer
9. District Game Officer
10. District Environmental Management Officer
11. District Fisheries Officer
12. District Forest Manager
13. District Medical Officer

Composition of the GGMKECTT

1. District Land and Natural Resource Officer
2. District Livestock and Fisheries Officer
3. District Planning Officer
4. District Legal Officer
5. District Community Development Officer
6. District Water Engineer
7. District Forest Manager
8. District Medical Officer
9. Chief Park Warden for Gombe, Mahale and Katavi
10. Regional Natural Resource Advisors for Katavi and Kigoma

Structure of the GGMKECTT



The chairperson and Secretary of the GGMKECTT are selected from the teams. These positions are rotational and are for duration of two years between Kigoma and Katavi regions. Conservation partners such as TNC, FZS, JGI and WCS as well as government institutions such as Wildlife Department, Tanzania Forestry Service; Tanzania National Parks are invited to attend all meeting as found necessary by the GGMKECTT’s Secretary. Technical teams in each District will meet quarterly, before the full council meeting and the GGMKECTT will meet twice a year (July and January). Technical team meetings costs will initially be covered by partners / donors support for two years starting from 2014/2015. District Councils are providing meeting venues as part of the contribution and commitment for now. It is expected that the respective councils will mainstream the budgets for these meetings with their own budgets so as to ensure sustainability of both DCTT and GGMKECTT meetings and activities. This is expected to start from financial year 2015/2016.

3.0 Roles of District Council Technical Teams and Greater GMK Ecosystem Conservation Technical Team (“The Steering committee”) are shown in the table below

Roles and responsibilities of District Council Technical teams are briefly summarized below:

- To coordinate natural resources inventory (survey) in order to assess status and prioritize conservation areas
- To coordinate conservation activities of various conservation partners within the GGMKEs
- To document, interpret and disseminate all research findings related to GGMKEs
- To share relevant data with the GGMKECTT and other stakeholders as necessary
- To provide data and information that will guide the development and implementation of general management plan (GMP) for the GGMKEs
- To raise awareness and understanding on the importance of the GGMKEs locally and globally.

The roles & responsibilities of the Greater GMK Ecosystem Conservation Technical Team (“The Steering committee”)

- To review reports, work plans and recommendations from the District Council Technical Teams and to provide relevant comments, suggestion and support
- To advice, oversee and process the implementation of land use changes so that legal and proper process is followed.

**Roles and responsibilities of District Council
Technical teams are briefly summarized below:**

- To implement decisions of the Inter-district Conservation Technical Team (the Steering committee)
- To enhance partnership with local, national and international conservation stakeholders in advancing District Conservation goals and objectives
- To identify resource-gap needs for advancing conservation in the respective councils through proper channels.
- To establish District Conservation Fund and conduct fund raising for conservation activities and advocate for part of revenue accrued from NR to be retained to support natural resources conservation activities.

The roles & responsibilities of the Greater GMK Ecosystem Conservation Technical Team (“The Steering committee”)

- To share and advice new and existing information, challenges and Opportunities in the Greater GMK Ecosystem, including technology and infrastructure development plans and planned commercial ventures
- To coordinate and integrate the activities among stakeholders.
- To raise awareness about the importance of the Greater GMK Ecosystem at local, national and international level.
- To fundraise resources for sustainable management of the GGMKEs

4.0 Some of the human activities causing environmental degradation in the GGMKEs



Illegal settlements in the forested areas are main cause of forest clearance through various ways including debarking



New trunk roads in forested area have improved access to forest resources such as timber, fuelwood and charcoal

For more information contact
Chairperson GGMK Steering Committee
P.O.BOX 332, Kigoma

The formation and activities of the GGMKECTT (“the Steering Committee”) are funded by African Biodiversity Collaborative Group and implemented collaboratively by the organizations shown below:



AFRICA BIODIVERSITY COLLABORATIVE GROUP